

Famed NOBILIS

Advanced column-based ICU bed with lateral tilt
– your partner in patient care

01

KEY FEATURES

02

SAFETY

03

FALL PREVENTION

04

PATIENT THERAPY

05

VEM

06

SUPPORT FOR MEDICAL STAFF

07

CONTROLS

08

PATIENT WEIGHING SYSTEM

09

FUNCTIONALITIES

10

BED POSITIONS

11

TECHNOLOGY



Famed NOBILIS

electric ICU bed with lateral tilt

Famed NOBILIS is an advanced electric hospital bed designed specifically for intensive care units. The structure supported by three cylindrical columns ensures stability and functionality adapted to the requirements of therapeutic positioning. Lateral tilt functions facilitate patient care, eliminate burdensome factors in the work of medical staff, and, when combined with an appropriate mattress, support the prevention and treatment of pressure ulcers. Intuitive control, operated via a central panel, a wired remote control, and control panels integrated into the side rails, for an easy adjustment of the bed's position to meet clinical requirements. The X-ray translucent mattress platform, the integrated certified weighing system, the high safe working load, full-length side rails, and specially designed cut-outs in the headboard to improve patient access are just some of the features of this advanced hospital bed.

01 KEY FEATURES

COMFORT AND SAFETY

- The three-column structure ensures stability and safety.
- Full-length side rails protect the patient from falling out of the bed even at extreme lateral tilt angles and a mattress with a thickness up to 230 mm.
- EasyDrop™ side rails, which lower below the mattress platform level, facilitate getting in and out of the bed.
- Control panels integrated into the side rails allow the patient to easily adjust the mattress platform position or call for assistance.
- A constant distance between the side rails eliminates the risk of finger and hand entrapment.
- Sensors preventing lateral tilting when the side rails are lowered protect the patient from falling out of the bed.
- The central wheel locking system with levers at each wheel secures the bed against unintended movement.
- CPR levers reset the mattress platform to a flat position — accessible even when the side rails are lowered, available on both sides of the bed.
- Control systems with the need of initial activation, minimize the risk of accidental position changes.
- pSilver™ technology applied to all plastic and coated components ensures bacteriostatic protection and supports the fight against hospital-acquired infections.
- Warning alarms for unlocked castors, and low battery alerts enhance safety.
- The night light, activated by a single button, illuminates the patient's way back to the bed.

pSilver™



EasyDrop™



PATIENT THERAPY

- Lateral tilt functions enable the use of therapeutic positioning aimed at regulating muscle tone, stimulating the nervous system, preventing the formation of pressure ulcers, and improving pulmonary ventilation and organ perfusion.
- Very Early Mobilization system supports recovery.
- The dedicated VEM control panel integrated into the side rails facilitates getting out of bed.
- The backrest angle indicator integrated into the mattress platform frame, along with a 30-degree position indicator displayed on the central panel.
- The intuitive control system provides access to therapeutic positions with a single button press on the central panel.
- Possibility to use an active anti-bedsore mattress with a thickness of up to 230 mm.
- The bed ends can be locked into the bed frame for increased stability and safe patient mobilization.
- Intuitive controls allow for a precise adjustment of the bed to the required position.
- The double autoregression function reduces excessive pressure in the lumbar region and calves in a sitting position, helping to prevent the development of pressure ulcers.

Famed NOBILIS

advanced,
column-based,
electric ICU bed
with lateral tilt

FUNCTIONALITY

- Lateral tilt functions facilitate patient care and eliminate burdensome factors for medical staff, such as spinal strain during patient lifting.
- The three-column structure ensures a high safe working load — up to 250 kg.
- Removable bed ends at the head and foot sections support early patient mobilization protocols.
- A special cut-out in the head end improves access for intubation and other procedures involving the patient's head or chest.
- The integrated, certified weighing system with an accuracy of up to 100 grams allows precise monitoring of patient weight fluctuations.
- A wide range of available controls facilitates patient positioning, and the optional foot control enables simultaneous bed adjustment and patient care.
- The built-in battery allows full bed operation during patient transport or in case of a power failure.
- EasyDrop™ side rails allow simultaneous performance of other patient care tasks.
- A dedicated tray for the X-ray cassette, with a positioning scale, ensures proper cassette alignment relative to the patient's body.
- The mattress platform is made of X-ray translucent HPL plates (MAE 0.38 mm Al).
- Compatible with patient lifts and other devices requiring access under the bed base.
- Nurse Call system — integrated bed call function or optional connection to the hospital's central system.





02 SAFETY

For years, we have been creating medical equipment that combines innovation, ergonomics, and the highest safety standards. We understand that in the hospital environment, every detail matters, which is why we focus on solutions from the design stage that not only meet strict standards but also facilitate daily work and enhance the comfort of care. We know that in medical treatment, what matters is not only advanced technologies but also a commitment to the safety of both patients and medical staff.

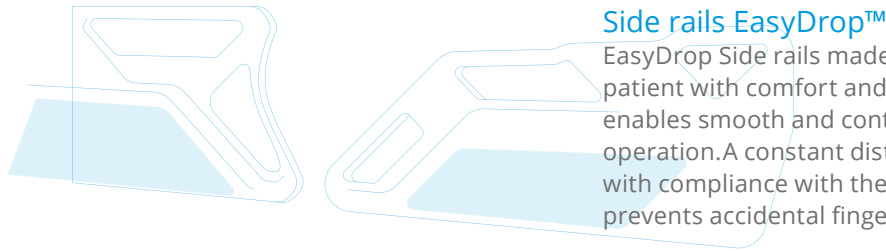
Annual social costs resulting from adverse events caused by a lack of safety measures in hospitals. ¹

1-2 trn USD

¹ World Health Organization (WHO). Global Action Plan for Patient Safety 2021-2030. Geneva: WHO; 2021. Available at: <https://www.who.int/publications/i/item/9789240032705> [Accessed: 03 March 2025].

SAFETY (TECHNOLOGY)

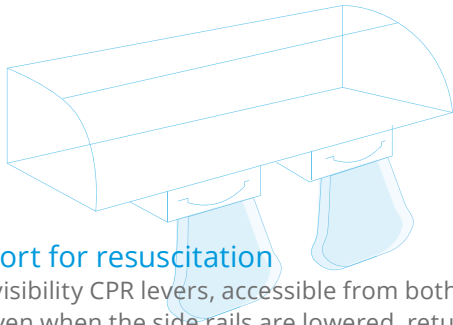
1



Side rails EasyDrop™

EasyDrop Side rails made of ABS material provide the patient with comfort and safety. The release mechanism enables smooth and controlled lowering with one-hand operation. A constant distance between the rails, along with compliance with the medical standard EN 60601-2-52, prevents accidental finger and hand entrapment.

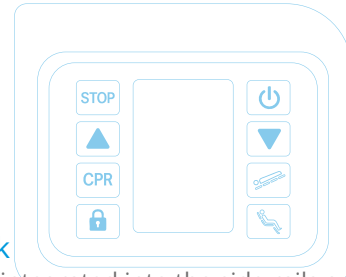
2



Support for resuscitation

High-visibility CPR levers, accessible from both sides of the bed even when the side rails are lowered, return the mattress platform to a flat position to enable resuscitation. The removable ABS headboard can be used as additional CPR support under the patient.

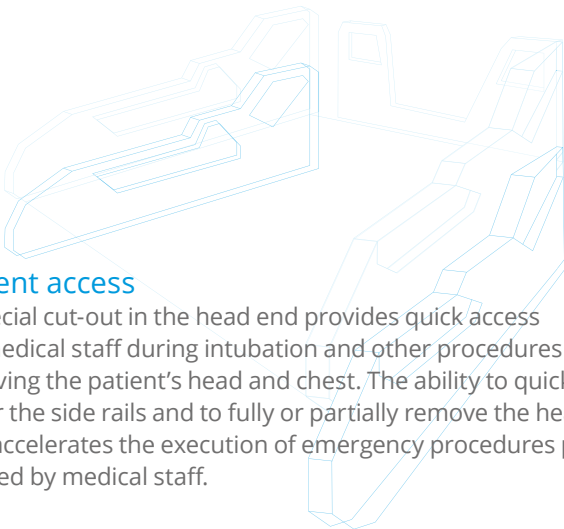
3



Function lock

Control panels integrated into the side rails are protected against accidental activation by the patient or medical staff. Activation occurs only after pressing the green button. The central panel allows medical staff to lock selected or all bed functions.

4



Patient access

A special cut-out in the head end provides quick access for medical staff during intubation and other procedures involving the patient's head and chest. The ability to quickly lower the side rails and to fully or partially remove the head end accelerates the execution of emergency procedures performed by medical staff.

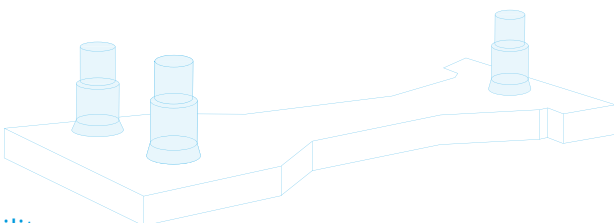
5

STOP

Patient safety systems

Patient safety is ensured by a range of protection systems that alert medical staff to potential hazards as well as to extreme or therapeutic positioning values of individual bed sections.

6



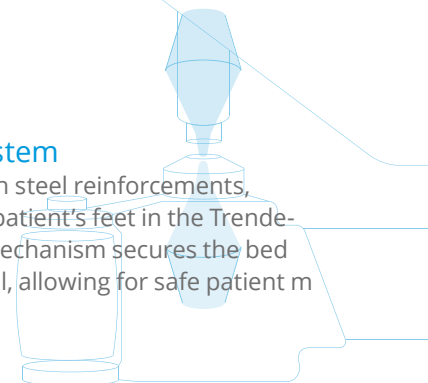
Stability

The structure supported by three cylindrical columns guarantees stability and enables the safe implementation of therapeutic positioning protocols. Double large castors with a central locking system provide protection against uncontrolled bed movement. An optional unlocked castor alarm is activated when the bed is connected to the power supply and remains active until the locking lever is engaged.

7

Bed ends with locking system

The bed ends, made of ABS with steel reinforcements, provide stable support for the patient's feet in the Trendelenburg position. The locking mechanism secures the bed ends against accidental removal, allowing for safe patient mobilization.



03 FALL PREVENTION

Lowered side rails alarm

The system blocks the use of lateral tilt functions if any of the side rails are lowered, protecting the patient from falls and injuries, and protecting the hospital from liability for potential damages.

Overload notification

When the maximum permissible load is exceeded, a notification message will appear on the weighing system display. The system detects bed overload and helps prevent situations that could compromise patient safety.

Unlocked castors alarm

The system notifies medical staff of unlocked castors when the bed is connected to the power supply. An audible signal warns the staff and helps prevent uncontrolled bed movement, which could pose a risk to patients (option).

Nurse Call

The easily accessible nurse call system allows the patient to quickly summon medical staff in an emergency situation. Faster staff response to patient calls can help reduce the number of falls and related injuries. Optionally, the system can be connected to the hospital's central system.

According to studies in the USA, annually

1 mln falls

According to studies, in the United States alone, there are up to 1 million patient fall incidents in hospitals each year, resulting in approximately 250,000 injuries and up to 11,000 deaths.²

250 000 injuries → **11 000** deaths occur

²Fall Currie L. and Prevention Injury. In: Hughes RG, ed. Patient safety and quality: an evidence-based handbook for nurses (Prepared with support from the Robert Wood Johnson Foundation) AHRQ Publication NO.08-0043. Rockville, MD: Agency for Healthcare Research and Quality; 2008.



Full-length side rails

The side rails protect the patient from falling out of the bed on the entire length of the mattress platform, and their height allows safe use with a mattress up to 230 mm thick. Anatomical hand grips integrated into the side rails support safe repositioning and getting up from the bed.

Under-bed LED light

The night light illuminates the patient's path and allows for a safe return to the bed during the night. The light is activated by a dedicated button located on the patient control panel integrated into the side rail.

Optimal position for standing up

The optimal height adjustment range and side rails that lower below the mattress platform level enable the patient to sit and stand up safely. The dedicated VEM panel (up/down button) and anatomical hand grips integrated into the side rail allow the bed to be raised to a height that facilitates standing up.

30–35% falls, result in injuries

14 000 USD (treatment costs)

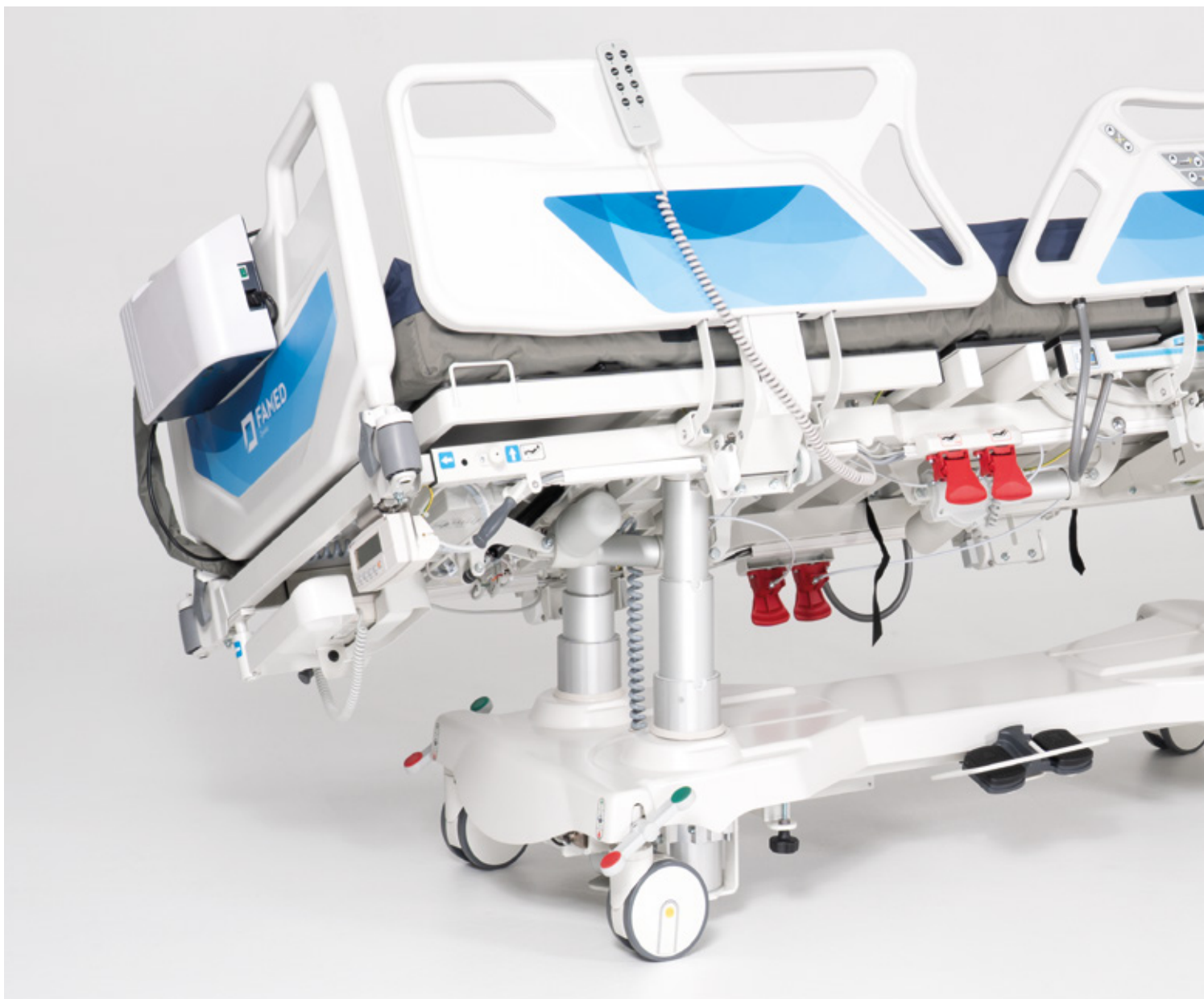
Approximately 30–35% of falls occurring in healthcare facilities result in injuries, with treatment costs exceeding 14,000 USD per incident, and extending the patient's hospital stay by an average of 6.3 days.³

³ Hill A.-M., Hoffmann T., Hill K., Oliver D., Etherton-Beer C., McPhail S., Brauer S., Haines T. Measuring falls events in acute hospitals—A comparison of three reporting methods to identify missing data in the hospital reporting system. *J. Am. Geriatr. Soc.* 2010;58:1347–1352. doi: 10.1111/j.1532-5415.2010.02856.x.

04 PATIENT THERAPY

Patient care in the intensive care unit requires actions that simultaneously support treatment and minimize the risk of complications resulting from immobility – such as pressure ulcers, muscle weakness, or thrombosis.





Lateral tilt

Lateral tilt enable medical staff to perform therapeutic positioning, supporting faster patient recovery. Regular repositioning reduces pressure on specific areas of the body, improves skin condition, facilitates lung ventilation, stimulates blood circulation, and helps to reduce swelling and pain caused by prolonged immobility. Precise adjustment of the lateral tilt angles is achieved through the central control panel, which displays the tilt value with an accuracy of 0.1 degree.

Double autoregression

It is designed to reduce excessive pressure in the lumbar region and lower legs when the patient is in a sitting position. Excessive pressure can damage capillaries, leading to tissue ischemia, the formation of wounds and ulcers, and an increased risk of pressure ulcers. Pressure reduction is a key element of anti-bedsore therapy, supporting faster patient recovery.

X-ray imaging

The X-ray translucent mattress platform made of HPL material enables X-ray imaging without the need to transport the patient to the radiology department. The X-ray cassette tray integrated into the backrest, featuring an intuitive positioning scale, allows precise placement of the cassette under the mattress platform and image acquisition without repositioning the patient.

Bed end locking and removal

The bed ends, made of durable ABS material, provide solid foot support during patient mobilization in the anti-Trendelenburg position. Thanks to steel reinforcements and the ability to lock the bed ends into the bed frame, the structure remains stable, supporting muscle recovery programs. Additionally, quick removal of the bed ends facilitates easier access to the patient and improves the comfort of care.



Patient care comes first

A wide range of control options and the ability to customize their functions to the needs of medical staff allow full focus on patient care. The optional foot control allows the staff to reposition the bed while performing caregiving activities, enhancing staff comfort, improving care efficiency, and supporting patient recovery.

VEM

Early patient mobilization is a key element of care in the intensive care unit. The programmed VEM functions support the patient in muscle rebuilding exercises, accelerating recovery. This solution facilitates both patient therapy and the work of medical staff, promoting a faster return to health and mobility.

Patient weighing system with 100 g accuracy

The patient weighing system with 100 g accuracy enables precise body weight monitoring, which is crucial for assessing the patient's condition, the effectiveness of clinical nutrition, and for adjusting fluid supply and medication dosing. The integrated system eliminates the need to transfer the patient to a separate scale, enhancing care comfort and reducing the workload of medical staff.

Mechanical and respiratory ventilation support

The bed is equipped with programmed Fowler and anti-Trendelenburg positions, as well as a function that signals when the backrest angle reaches 30°, 45°, or another value set by the staff — with the option to automatically stop movement at the selected angle. This facilitates mechanical ventilation, improves gas exchange, and reduces the risk of VAP (ventilator-associated pneumonia) and aspiration of gastric contents, which is critical for patients with feeding tubes or swallowing disorders.

04 PATIENT THERAPY

Key factors include regular repositioning, early mobilization, proper body positioning, and the use of an anti-bedsore mattress. Famed Nobilis integrates all these functions, providing real support for medical staff in their daily work.



Prevention of pressure ulcers

Lateral and longitudinal tilts, along with pre-programmed positions accessible with the press of a button, promote frequent patient repositioning, supporting the prevention and treatment of pressure ulcers. Lateral tilts facilitate patient care and increase staff comfort. The use of the Famed CareSafe™ dynamic pressure mattress ensures effective care for patients at very high risk of pressure ulcers and treatment of pressure ulcers up to stage IV (EPUAP).

Pre-programmed therapeutic positions

Pre-programmed positions, such as Fowler's, examination, Trendelenburg, anti-Trendelenburg, cardiology chair, CPR, and auto-contour, facilitate and accelerate patient positioning, supporting respiratory and circulatory therapy as well as emergency procedures.

05 VEM

Early patient mobilization is one of the main topics addressed in the context of Intensive Care Units. Studies show that out-of-bed rehabilitation is possible for over 65% of patients. Out-of-bed mobilization refers to any activity in which the patient sits at the edge of the bed (dangling), stands, or walks.

Allowing the patient to engage in this type of activity will be possible after evaluating their neurological condition – general calmness and the ability to follow simple commands are required. The appropriate level of mobilization should be determined based on the patient’s condition and all safety criteria: ⁴

- respiratory criteria,
- cardiovascular criteria,
- neurological criteria,
- other (post-operative recommendations/general condition).

Early patient mobilization is a crucial element of every modern hospital. Famed Nobilis facilitates the patient’s ability to get out of bed and perform exercises through the use of dedicated VEM panels, lockable, stable bed ends, and side rails with multiple secure grip points. Famed Nobilis can assist the patient in standing up and moving away from the bed, encouraging their return to functional recovery and health. For the hospital, this means quicker patient discharge, with the patient nearing full recovery.

VEM phases

01

In the first phase, the medical staff, based on the patient’s condition, may decide to raise the backrest to a 30° position or higher to prevent ventilator-associated pneumonia (VAP) ⁵. When adjusting the backrest position (up/down), it will automatically set to 30 degrees and either stop or signal to the medical staff when to halt, emitting an audible signal (1).

02

In the second phase, the medical staff may decide to position the bed in the cardiology chair position and begin the muscle recovery program with the patient (2). The anti-Trendelenburg position, combined with the lockable bed ends, allows the patient to test their ability to stand. With the built-in calf section assisted by a gas spring, we can effortlessly raise the patient’s legs to a position that facilitates putting on socks or compression cuffs, or begin a lower limb mobilization exercises (2a).

03

In the third phase, with the staff assistance (3), the patient may attempt to stand. If the patient is strong enough to try standing, they can use the dedicated control panel located on the outside of the side rail (3b). The anatomical hand support in the side rail is equipped with up/down buttons (3c), allowing the patient to be raised to a level at which they can stand independently. If the patient is too weak, staff assistance will be required.

⁵ Hunter J.D., Corry P.R.: „Ventilator – associated pneumonia“ BJA CEPD 2002

65%

of patients have the ability
for early mobilization

⁴ Early Mobilization of Patients in Intensive Care: Organization, Communication and Safety Factors that Influence Translation into Clinical Practice, Critical Care volume 22, Article number: 77 (2018)



06 SUPPORT FOR MEDICAL STAFF



The structure, supported by three stable columns, allows for lateral tilt of up to 25 degrees in each direction. The appropriately adjusted movement speed, fall prevention system, and the wide range of available controls make this solution an essential support in reducing the challenges faced by medical staff in their daily work.

Reduced risk of injury for medical staff

Lateral tilt facilitates patient care without the need to lift the patient, reducing strain on the lower back, shoulder and arm muscles, as well as the risk of spinal injuries and the associated treatment costs and work absences.

Easy patient access

The ability to adjust the lateral tilt during tasks like changing bed linens, washing the patient, treating wounds, or providing physiotherapy makes it easier for medical staff to access the patient and improves workflow.

Reduced physical effort

The use of lateral tilt in therapeutic positioning reduces the physical effort required by medical staff to properly position the patient on the bed, prevent pressure ulcers, provide care, and change bedding.

More attention to the patient

The foot control with lateral tilt adjustment allows medical staff to focus on the patient and perform caregiving tasks freely, using both hands at the same time.

25° lateral tilt

Reduction of repetitive movements

Limiting repetitive movements and forced postures reduces the risk of musculoskeletal injuries and chronic pain. This improves the ergonomics of work and the physical comfort of staff, while simultaneously enhancing patient care efficiency.

We care for medical staff

Safety systems

The unlocked castors alarm, nurse call system, lateral tilt adjustment lock when side rails are lowered, and overload notification system protect medical staff from making potentially life-threatening errors that could endanger patients' health and safety.

Cut-out in the headboard

A special cut-out in the headboard provides medical staff with easy access to the patient's chest and head, allowing procedures to be performed comfortably without the need to remove the bed end.

Pre-programmed positions

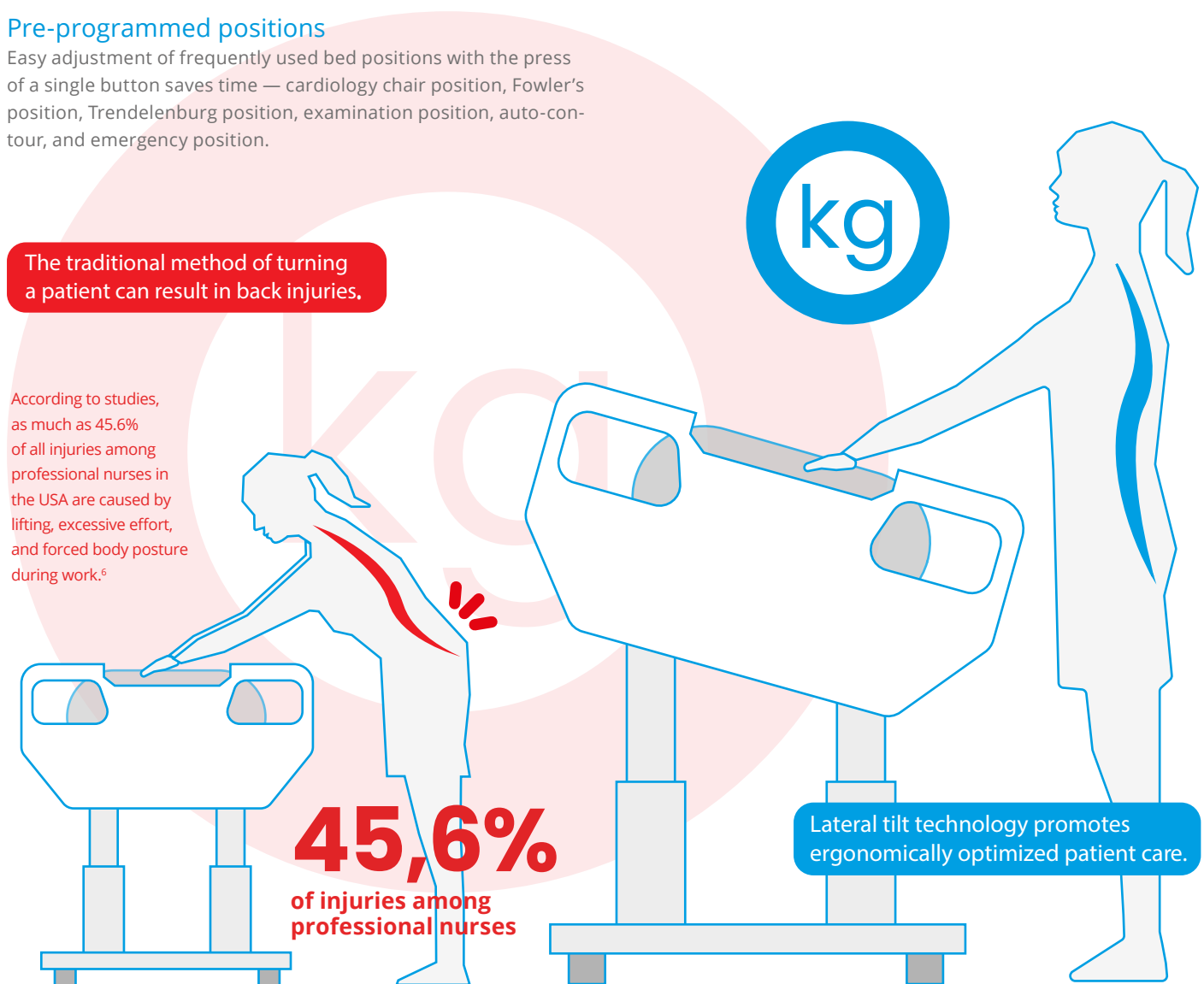
Easy adjustment of frequently used bed positions with the press of a single button saves time — cardiology chair position, Fowler's position, Trendelenburg position, examination position, auto-contour, and emergency position.

Easy disinfection

The column-based structure, the HPL mattress platform covering over 90% of the surface, the ABS base cover, and the pSilver™ technology-enhanced varnished and plastic components of the bed support disinfection and help to prevent the spread of microorganisms.

One-handed side rails operation

EasyDrop™ side rails with a release system allow smooth and controlled lowering of the side rails by medical staff using one hand. When lowered, the side rails fit as close as possible to the mattress platform, saving space at the sides of the bed.



⁶ Bureau of Labor Statistics, Occupational injuries and illnesses among registered nurses, Monthly Labor Review, 2018, dostępne pod adresem: <https://www.bls.gov/opub/mlr/2018/article/occupational-injuries-and-illnesses-among-registered-nurses.htm> [dostęp: 10.03.2025].

07 CONTROLS

CONTROLS in Famed NOBILIS:

- Battery charge indicator.
- Bed power supply indicator.
- Touchscreen.
- The angle of the bed sections displayed on the screen with an accuracy of 0.1 degree.
- Information on the last adjusted function.
- Customizable settings to suit personal preferences.
- Ability to lock all or selected bed functions (excluding Trendelenburg and CPR positions).
- Programmed positions available with the press of a button.
- Dedicated shelf for the central panel, with the option to stow it under the bed platform.
- Activation and automatic shutdown system.



Patient control panel

The dedicated patient control panel is located on the inside of the side rails. The panel allows adjustments to height, auto-contour position, backrest and thigh segments, and provides access to the nurse call system and under-bed light switch. The intuitive interface with raised buttons in contrasting colors facilitates easy panel operation, while the activation system prevents accidental changes to the bed position.



Staff control panel

The dedicated staff control panel is located on the outside of the side rails. The control panel allows adjustments to bed height, auto-contour position, backrest and thigh segments, as well as Trendelenburg and anti-Trendelenburg positions. The outside of the side rails also contains a control panel to assist the patient in getting out of bed.



Foot control

The foot control allows for adjustment of bed height or lateral tilt while simultaneously working with the patient and assisting with bed position changes. It can be mounted on either side of the bed.



Remote control

The remote control allows adjustment of bed height, backrest angle, and thigh segment angle, as well as simultaneous adjustment of the backrest and thigh segment angles (auto-contour). Optionally, the remote comes with an indicator light showing when the bed is disconnected from the power supply.

08 PATIENT WEIGHING SYSTEM

The hospital bed with an integrated patient weighing system is a solution that brings real benefits to patients, medical staff, and the entire hospital. One of the most accurate weighing systems available on the market ensures precise monitoring of the patient's condition, improves staff work comfort, and supports the effectiveness of therapy. This is an essential piece of equipment for every intensive care unit (ICU).

All-in-one solution available in Famed NOBILIS:

- Foldable design.
- Icon buttons for easier navigation.
- Automatic self-test on every startup.
- Ability to select the weighing unit with a single button press.
- Measurement accuracy up to 100 grams.
- Quick tare function.
- Option to freeze the patient's weight.
- Intuitive service menu.
- Compatibility with the hospital's system.
- LCD display.

Continuous patient weight monitoring

Allows real-time tracking of changes in the patient's body weight without the need to transfer them from the bed, which is especially important for critically ill patients.

Accuracy up to 100 g

An accuracy of 100 g allows for highly precise monitoring of changes in the patient's body weight, which is crucial when dosing medications based on body weight or assessing fluid balance (e.g., detecting fluid retention or dehydration).

Detection of swelling and changes in fluid balance

High weighing precision enables a quick response to fluctuations in the fluid and electrolyte balance.

Patient safety

The ability to monitor the patient's weight directly on the bed reduces the risk of injuries during patient transfer and accidental disconnection of medical equipment.

Reduced workload for medical staff

The absence of the need to manually transfer and weigh the patient saves time and reduces the risk of injuries among staff (e.g., back pain).

Reduction of treatment costs

Fewer complications and better therapy control lead to shorter hospital stays and lower treatment costs. Reducing the burdens on medical staff helps minimize treatment costs and work absences caused by injuries during patient lifting.



Cut-outs in the head end facilitate access during intubation and other procedures involving the patient's head and chest

Full-length side rails

Control panels in the side rails for patients and medical staff

Mattress platform made of X-ray translucent HPL plates

Bumpers to prevent damage to walls and equipment

Therapeutic positions available with the press of a button on the central control panel

Central wheel lock lever and directional wheel for straight-line movement



Option to extend the bed platform by 280 mm to shorten it by 70 mm

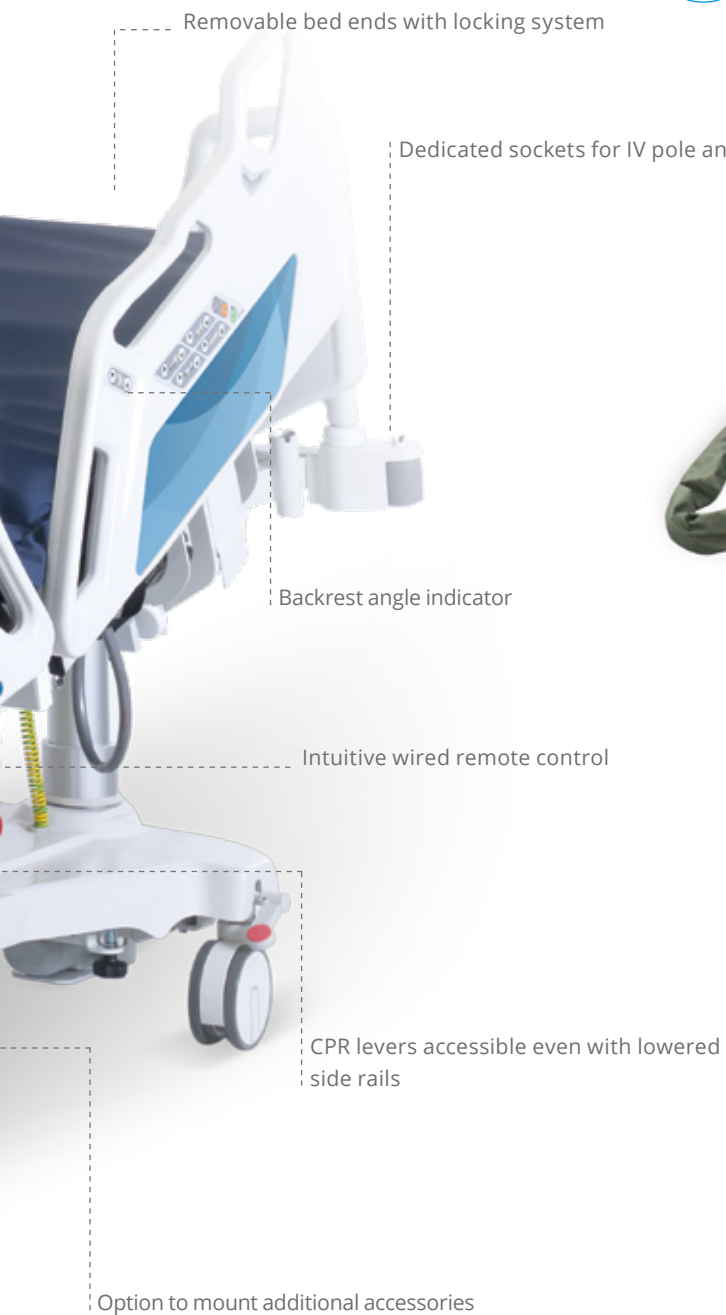


Option to remove or retract the bed ends



Ground clearance of 165 mm in height over a length of 640 mm or 90 mm over a length of 945 mm

09 FUNCTIONALITIES



Famed CareSafe™ ADVANCING CARE IN PRESSURE ULCER PREVENTION

The automatic dynamic pressure mattress is filled with 17 independent air chambers powered by a pump. An additional foam overlay protects the patient in case one of the chambers is damaged. The mattress is designed for patients with a very high risk of pressure ulcers and for the treatment of pressure ulcers up to stage 4 (EPUAP). The quiet operation of the pump, which pumps 8 liters of air per minute into the chambers, ensures a peaceful sleep and recovery. The variable or continuous low-pressure therapy mode and the automatic pressure adjustment system, depending on the patient's body weight (up to 250 kg), ensure high therapeutic effectiveness. The waterproof and vapor-permeable cover protects the patient's skin from damage and helps maintain its proper condition.



Plastic bumpers



X-ray cassette tray with scale



Weighing system with 100-gram accuracy

10 BED POSITIONS



Fowler's position



Cardiology chair position



Examination position



Auto-contour



Lateral tilts



Anti-Trendelenburg position



Trendelenburg position



Calf section adjustment



Backrest section adjustment



Thigh section adjustment



Height adjustment

TECHNICAL DATA	LE-13 Famed NOBILIS
Total length	2220 mm
Total width	990 mm
Extension / shortening of the bed platform	280 / 70 mm
Maximum mattress dimensions	2000 x 850 x 230 mm
Height adjustment	490 - 870 mm
Maximum backrest angle	70°
Maximum thigh segment angle	40°
Maximum calf segment angle	41°
Trendelenburg / anti-Trendelenburg tilt	15° / 13°
Lateral tilt	25°
Backrest autoregression	120 mm
Thigh segment autoregression	90 mm
Clearance under the bed (height x length)	165 x 640 mm / 90 x 945 mm
Maximum load	250 kg
Protection class (IP according to IEC 60529 standard)	IPX4
Wheel diameter	150 mm

ADDITIONAL EQUIPMENT:

- Urinal holder WL-19.6
- Bedpan holder WL-20.61
- Double foot controller WL-99.54
- Arm holder UR-07.02
- Arm holder UR-07.04
- IV pole holder WK-17.0
- Angled IV pole holder WK-17.2
- Unlocked wheel alarm WL-99.73
- integration with an external nurse call system WL-99.70
- USB socket WL-99.67

11 TECHNOLOGY



pSilver™

All ABS components are manufactured using pSilver™ technology. The preform with silver nanoparticles used in the molding process provides effective bacteriostatic protection. The use of pSilver™ technology in areas most frequently touched by the patient helps limit microorganism growth. pSilver™ is also a process for treating plastic components, ensuring a smooth surface whose texture makes it difficult for contaminants to accumulate.



EasyDrop™

A system ensuring maximum safety and comfort for the use of Famed Żywiec hospital beds. EasyDrop™ side rails protect the patient along the entire length of the mattress platform, and their height allows safe use of the bed even with mattresses up to 230 mm thick. The ABS material used for the side rails ensures high durability and stability. Rotating dampers and ergonomic levers to release the side rail locks allow for smooth and controlled lowering below the mattress platform level, while the slowing mechanism enables easy one-handed operation, making it easier for staff to work. When lowered, the side rails fit closely to the bed, saving space at the sides of the bed. Built-in control panels facilitate bed positioning, and the early mobilization system supports faster patient recovery.

Famed Żywiec is a leading European manufacturer of high-quality medical equipment. For more than 75 years, we have been supplying medical facilities with thousands of the highest quality operating tables, hospital and delivery beds and treatment chairs. Our company's products are used by doctors in Poland and in more than 120 countries around the world.

We are distinguished by our qualified staff, wide product portfolio, modern machinery and unique technological solutions used in production. We were one of the first companies in the world to use carbon in the production of operating tables. We also offer the world's safest medical imaging table.

Our mission is to make the work of medical personnel easier and increase patient comfort during their hospital stay. Our innovative design and efforts to ensure product reliability, directly contribute to improving the quality of medical care in Poland and around the world.

President of Famed Żywiec

Marek Szczyk

Famed Żywiec Sp. z o.o.Fabryczna 1
34-300 Żywiec, Poland**Office:**tel.: +48 33 866 62 00
fax: +48 33 475 58 90
sekretariat@famed.com.pl**Export:**tel.: +48 33 866 63 11
export@famed.com.plwww.famed.com.pl

Edition 384/2026/03/3. Famed Żywiec reserves the right to modify the product and specification as part of technical progress. All illustrations and photos used in this material are for illustrative purposes only and may not reflect the finished product. The people shown in the photos are not medical professionals. They are models. The device presented in the catalog is intended for use in health care facilities by authorized persons after having read the manual (IFU).