



# FAMED

Żywiec

Member of REINSBERG GROUP



ACCESSORIES - GYNECOLOGY, PROCTOLOGY,  
UROLOGY

## EXPERIENCED PARTNER IN THE FIELD OF GYNECOLOGICAL PROCEDURES

- High value of longitudinal tilts reaching up to **40°** in connection with the **collision-free adjustment** of the table movements provides trouble-free access to the operating field and limits the use of retractors (collision detection systems available on selected models);
- Footrests designed for **lithotomy position** - the staff is able to quickly abduct to the side and lower the footrests to provide a unique amount of space for the surgeon - the width of the entire top (up to **550 mm** [OPTIMA]). There is no need to dismantle the footrests;
- Additional footrests with an additional cutout in the groin area and footrests made of carbon fiber (completely translucent for X-rays) are available;
- A large value of longitudinal travel (**up to 400 mm**) operated from the remote control is paired with a **stable support** (4 supports, each with a diameter of up to 50 mm) - allows the patient's pelvis to be placed far from the table column, which increases the space for the C-arm and the surgeon.



## TABLE DESIGN PROVIDES EASY DISINFECTION AND EASE OF USE

- The tables meet the **IPX4** water protection standard (according to IEC 60529) - seals shorten up the time that is needed for cleaning and disinfection;
- The tables have the best corrosion protection technology on the market - **InteliProtectPlus™** - **AISI 316L** steel unmatched on the market of operating tables (according to EN 10088), additional zinc layer protection on metal parts and carbon fiber that facilitates repairs and speeds up the disinfection process;
- **Two types of mattresses** - polyurethane (available on SU-02, SU-03, OPTIMA (SU-05) tables) and anti-bedsores, foam with memory effect (standard on OPTIMA (SU-05.15) and HYPERION, option on SU-02, SU-03, OPTIMA (SU-05)) - both are **completely waterproof** and easy to disinfect. Polyurethane mattresses are resistant to cuts and damage - even after damage they do not absorb liquids;
- **A large amount of space for the feet** (especially in H-shaped bases, reaching up to 174 mm - HYPERION) allows you to approach the patient closely;
- High translucency of table tops reaching **MAE 0.25 mm Al** (OPTIMA (SU-05.15)) or **0.36 mm Al** for a table with **360° imaging** (FLARE);
- **Dedicated accessories** for gynecological, urological and proctological surgery;
- A large selection of positioners, belts and handles that stabilize the patient;
- **Carbon fiber segments** with 360° imaging.





**SG-44.6**  
SEAT PLATE EXTENSION WITH CUT OUT

Segment extending the top has a profiled cutout for easy access to the patient's body. Equipped with two accessory rails and a wedge holder, e.g. for a urological bowl.

**Detailed information**

- Top translucent for X-rays
- Polyurethane mattress
- Wedge holder for mounting accessories
- Quick-release mounting point (wedges)
- Length 370 mm
- Compatibility:** SU-02, SU-03, OPTIMA (SU-05.09, 5.12)



**SG-44.8**  
SEAT PLATE EXTENSION WITH CUT OUT

Segment extending the top has a profiled cutout for easy access to the patient's body. Equipped with two accessory rails and a wedge holder, e.g. for a urological bowl.

**Detailed information**

- Top translucent for X-rays
- Welded foam mattress, 80 mm
- Wedge holder for mounting accessories
- Quick-release mounting point (wedges)
- Length 370 mm
- Compatibility:** OPTIMA (SU-05.15, 5.12)



**SG-44.7**  
SEAT PLATE EXTENSION WITH CUT OUT

Segment extending the top has a profiled cutout for easy access to the patient's body. Equipped with two accessory rails and a wedge holder, e.g. for a urological bowl.

**Detailed information**

- Top translucent for X-rays
- Foam mattress, sewn and glued, 80 mm
- Wedge holder for mounting accessories
- Length 370 mm
- Compatibility:** HYPERION



**AS-67**  
CARBON FIBRE PLATE

It gives the possibility of full 360° imaging and increases the universality of the general surgery table. Compatible with InfiniMove™ adapters, it has the possibility of mounting accessories along the entire length of the countertop. The optional mounting system on the accessory rails allows installation on most tables available on the market.

Dedicated stand (vertical storage) with holders for other accessories present in the operating theater - OPTIONAL.

Versions: W1: mattress 40 mm (SU-03, 5.9, 5.12), W2: mattress 80 mm (5.15, 5.20), W3: mattress 80 mm (HYPERION).

**Detailed information**

- Made of carbon fiber
- Includes foam mattress, sewn and glued
- Length 1100 mm (+ mounting adapter, depending on the model)
- Accessory rails + compatibility with optional InfiniMove™ adapters
- Compatibility:** SU-03, OPTIMA (SU-05.9, 5.12, 5.15, 5.20), HYPERION



**AS-63.6**  
**TRANSFER BOARD**

It is used to support the limbs during the transport of the patient or during the procedure, before fixing the legs in supports or stirrups.

Dismountable mattress, fastened to the structure.

**Detailed information**

- Mounted on accessory rails
- No angle adjustment
- Lightweight frame construction
- Mattress reducing patient discomfort, 50 mm
- Length 710 mm
- Compatibility:** SU-02, SU-03, OPTIMA (SU-05.09, 5.12)



**AS-63.8**  
**TRANSFER BOARD**

It is used to support the limbs during the transport of the patient or during the procedure, before fixing the legs in supports or stirrups.

Dismountable mattress, fastened to the structure.

**Detailed information**

- Mounted on accessory rails
- No angle adjustment
- Lightweight frame construction
- Mattress reducing patient discomfort, 50 mm
- Length 710 mm
- Compatibility:** OPTIMA (SU-05.15, 5.12)



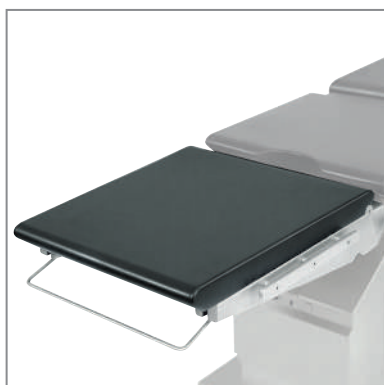
**AS-63.7**  
**TRANSFER BOARD**

It is used to support the limbs during the transport of the patient or during the procedure, before fixing the legs in supports or stirrups.

Dismountable mattress, fastened to the structure.

**Detailed information**

- Mounted on accessory rails
- No angle adjustment
- Lightweight frame construction
- Mattress reducing patient discomfort, 50 mm
- Length 710 mm
- Compatibility:** HYPERION



**SG-42.6**  
**LEG PLATE**

The single-section footrest allows you to support the patient without worrying about skin pinching. Translucent for X-rays (does not allow 360° imaging).

**Detailed information**

- Wedge (quick connectors) mounting
- Gas spring angle adjustment
- Polyurethane mattresses
- Length 523 mm
- Compatibility:** SU-02, SU-03, OPTIMA (SU-05.09, 5.12)



**AS-35.0**  
**LEG PLATE**

The single-section footrest allows you to support the patient without worrying about skin pinching. Translucent for X-rays (does not allow 360° imaging).

**Detailed information**

- Wedge (quick connectors) mounting
- Gas spring angle adjustment
- Foam mattress, sewn and glued, 60 mm
- Length 659 mm
- Compatibility:** SU-14

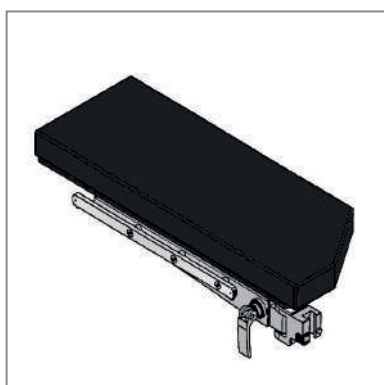


**SG-42.7**  
**LEG PLATE**

The single-section footrest allows you to support the patient without worrying about skin pinching. Translucent for X-rays (does not allow 360° imaging).

**Detailed information**

- Wedge (quick connectors) mounting
- Angle adjustment by remote control
- Foam mattress, sewn and glued, 80 mm
- Length 615 mm
- Compatibility:** HYPERION



**N-22/20**  
**LEG PLATES WITH CUT OUTS**

The footrests provide more space in the patient's groin area, they have strong cut outs to facilitate the surgeon's access when the footrests are abducted.

**Detailed information**

- Carbon fiber plate
- Angle adjustment by remote control
- Set of 2 pieces (left and right)
- Wedge (quick connectors) mounting
- Foam mattress, sewn and glued, 80 mm
- Length 715 mm
- Compatibility:** HYPERION



**SG-46.6, SG-47.6**  
**MULTI-FUNCTIONAL DOUBLE JOINT**  
**LEG PLATES**

Footrests allow you to achieve more positions, including lateral spread.

**Vertical adjustment:**  
smaller section: + 45° / -90°,  
larger section: + 45° / -90°

**Horizontal adjustment:**  
smaller

**Detailed information**

- Index for right and left footrests, respectively
- Adjustment with gear mechanisms
- Wedge (quick connectors) mounting
- Polyurethane mattresses
- Compatibility:** SU-02, SU-03, OPTIMA (SU-05.09, 5.12)



**WS-64.5**  
**LEG HOLDERS WITH LOOPS**

Loop-shaped handles that can be easily removed for disinfection.

They are used to support the patient's legs, e.g. in a lithotomy position. Height adjustment in two points: on the clamps on the supports and in the adapter on the rail.

Product sold as a pair. Optionally available individually.

**Detailed information**

Mounted on accessory rails

Two adaptors for rails included WS-17.6

Stainless steel supports

**Compatibility:** SZ-01, SU-14, SU-02, SU-03, OPTIMA (5.09, 5.12, 5.15, 5.20), FLARE, HYPERION



**WS-05.5**  
**LEG HOLDERS, GOEPEL TYPE**

Support with adjustable height, angle (on the accessory rail) and an anatomically profiled mattress, whose angular position can be adjusted. Goepel is equipped with a belt to support the limb. Other dedicated holders with increased SWL are available for the HYPERION table.

Product sold as a pair. Optionally available individually.

**Detailed information**

Mounted on accessory rails

Two adaptors for rails included WS-17.6

Length of the rod (height adjustment) 500 mm

Stainless steel supports

Mattress made of polyurethane

**Compatibility:** SZ-01, SU-14, SU-02, SU-03, OPTIMA (5.09, 5.12, 5.15, 5.20), FLARE, HYPERION



**AS-09**  
**HEAVY DUTY LEG HOLDERS, GOEPEL TYPE**

Support with adjustable height (on the accessory rail) and rotation in the axis (durable mechanism of a mini gears) and an anatomically profiled mattress, whose angular position can be adjusted. Goepel is equipped with a belt to support the limb. Product sold as a pair. Optionally available individually.

**Detailed information**

Mounted on accessory rails

Two adaptors for rails included WS-17.8

Stainless steel supports

Length of the rod (height adjustment) 270 mm

Mattress made of polyurethane

**Compatibility:** SZ-01, SU-14, SU-02, SU-03, OPTIMA (5.09, 5.12, 5.15, 5.20), FLARE, HYPERION



**KTEK400**  
**STIRRUP LEG HOLDER 181 KG**

Leg holder with stirrup shoe, wide range of motion in the lithotomy position, well-fitted and very soft foam with a thickness of 2.5 cm to prevent pressure ulcers.

Movement range: -55° / +85°. Patented design provides 22° larger ROM compared to standard solutions.

Stirrups do not have zones where limbs / fingers can be crushed.

**Detailed information**

Mounted on accessory rails

Must be installed with a dedicated KTEK4200 mounting adapter - not compatible with WS type adapters

SWL 181 kg

Limb fastening: Silicone belt

**Compatibility:** SZ-01, SU-14, SU-02, SU-03, OPTIMA (5.09, 5.12, 5.15, 5.20), FLARE, HYPERION



**KTEK3000**  
STIRRUP LEG HOLDER 157 KG

Leg holder with stirrup shoe, wide range of motion in the lithotomy position, well-fitted and very soft foam with a thickness of 2.5 cm to prevent pressure ulcers.

Movement range: -55° / +85°. Patented design provides 22° larger ROM compared to standard solutions.

Stirrups do not have zones where limbs / fingers can be crushed.

**Detailed information**

Mounted on accessory rails

Must be installed with a dedicated KTEK4200 mounting adapter - not compatible with WS type adapters

SWL 157 kg

Limb fastening: Velcro

**Compatibility:** SZ-01, SU-14, SU-02, SU-03, OPTIMA (5.09, 5.12, 5.15, 5.20), FLARE, HYPERION



**KTEK5000**  
STIRRUP LEG HOLDER 227 KG

Leg holder with stirrup shoe, wide range of motion in the lithotomy position, well-fitted and very soft foam with a thickness of 2.5 cm to prevent pressure ulcers.

Movement range: -55° / +85°. Patented design provides 22° larger ROM compared to standard solutions.

Stirrups do not have zones where limbs / fingers can be crushed.

**Detailed information**

Mounted on accessory rails

Must be installed with a dedicated KTEK4200 mounting adapter - not compatible with WS type adapters

SWL 227 kg

Limb fastening: Velcro

**Compatibility:** SZ-01, SU-14, SU-02, SU-03, OPTIMA (5.09, 5.12, 5.15, 5.20), FLARE, HYPERION



**KTEK3100**  
CLEAN STIRRUP LEG HOLDER 157 KG

Leg holder with stirrup shoe, wide range of motion in the lithotomy position, well-fitted and very soft foam with a thickness of 2.5 cm to prevent pressure ulcers.

Movement range: -55° / +85°. Patented design provides 22° larger ROM compared to standard solutions.

Stirrups do not have zones where limbs / fingers can be crushed.

**Detailed information**

Mounted on accessory rails

Must be installed with a dedicated KTEK4200 mounting adapter - not compatible with WS type adapters

SWL 157 kg

Limb fastening: silicone belt

**Compatibility:** SZ-01, SU-14, SU-02, SU-03, OPTIMA (5.09, 5.12, 5.15, 5.20), FLARE, HYPERION



**KTEK5100**  
CLEAN STIRRUP LEG HOLDER 227 KG

Leg holder with stirrup shoe, wide range of motion in the lithotomy position, well-fitted and very soft foam with a thickness of 2.5 cm to prevent pressure ulcers.

Movement range: -55° / +85°. Patented design provides 22° larger ROM compared to standard solutions.

Stirrups do not have zones where limbs / fingers can be crushed.

**Detailed information**

Mounted on accessory rails

Must be installed with a dedicated KTEK4200 mounting adapter - not compatible with WS type adapters

SWL 227 kg

Limb fastening: silicone belt

**Compatibility:** SZ-01, SU-14, SU-02, SU-03, OPTIMA (5.09, 5.12, 5.15, 5.20), FLARE, HYPERION



**KTEK250**  
**CLEAN STIRRUP LEG HOLDER - JUNIOR**

Leg holder with stirrup shoe, wide range of motion in the lithotomy position, well-fitted and very soft foam with a thickness of 1.9 cm to prevent pressure ulcers. Version dedicated for patients aged 6-12 or smaller adults.

Lithotomy range:  $-55^{\circ}$  /  $+85^{\circ}$ , abduction range:  $+25^{\circ}$  /  $-9^{\circ}$ . Patented design provides  $22^{\circ}$  larger ROM compared to standard solutions.

Stirrups do not have zones where limbs / fingers can be crushed.

**Detailed information**

Mounted on accessory rails

Must be installed with a dedicated KTEK4200 mounting adapter - not compatible with WS type adapters

SWL 113 kg

Limb fastening: silicone belt

**Compatibility:** SZ-01, SU-14, SU-02, SU-03, OPTIMA (5.09, 5.12, 5.15, 5.20), FLARE, HYPERION



**KTEK800**  
**CLEAN STIRRUP LEG HOLDER - BARIATRIC**

Leg holder with stirrup shoe, wide range of motion in the lithotomy position, well-fitted and very soft foam with a thickness of 2.5 cm to prevent pressure ulcers. Version dedicated for bariatric patients (BMI over 29).

Lithotomy range:  $-55^{\circ}$  /  $+85^{\circ}$ , abduction range:  $+25^{\circ}$  /  $-9^{\circ}$ . Patented design provides  $22^{\circ}$  larger ROM compared to standard solutions.

Stirrups do not have zones where limbs / fingers can be crushed.

**Detailed information**

Mounted on accessory rails

Must be installed with a dedicated KTEK4200 mounting adapter - not compatible with WS type adapters

SWL 363 kg

Limb fastening: silicone belt

**Compatibility:** SZ-01, SU-14, SU-02, SU-03, OPTIMA (5.09, 5.12, 5.15, 5.20), FLARE, HYPERION



**KTEK4200**  
**KTEK STIRRUP HOLDER ADAPTER**

Quick to mount adapter for stirrup leg holders (KTEK), compatible with mounting with a flat end.

One-hand installation. Fastening the leg holder to the adapter is done using a knob.

The adapter has protection against accidental disassembly. EU size (others available as options).

**Detailed information**

Mounted on accessory rails

One-handed installation

Protection against accidental disassembly

EU size (other optional)

**Compatibility:** SZ-01, SU-14, SU-02, SU-03, OPTIMA (5.09, 5.12, 5.15, 5.20), FLARE, HYPERION



**KTEK1000**  
**TROLLEY FOR TRANSPORTING / STORING STIRRUPS**

Used to store or transport stirrups. It has dedicated handles, so we can stably store stirrups vertically, saving space on the operating theater. Easy to clean and durable.

**Detailed information**

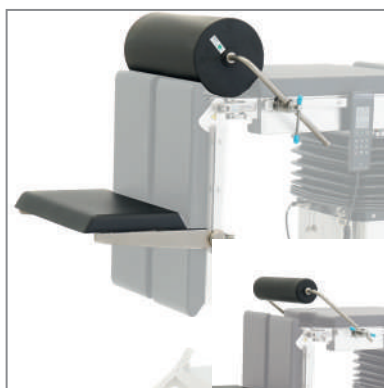
Place for mounting one pair

Compartments for carrying adapters and accessories

Steel frame, plastic handles

Four wheels





### WS-30.5 KNEELING FRAME

Equipped with a kneeling frame and roller that allows the patient's buttocks to be pushed out of the table and / or the lumbar section of the spine to be elevated. The kneeling frame and roller have height adjustment. We achieve the angle of the patient by adjusting the footrests of the table, which form the base of this positioner.

#### Detailed information

|   |
|---|
| Mounted on accessory rails                                  |
| Roller diameter 80 mm or 210 mm (option, AS-16.5)           |
| Two adapters for accessory rails included                   |
| Polyurethane roller   |
| <b>Compatibility:</b> SU-02, SU-03, OPTIMA (SU-05.09, 5.12) |



### WS-30.7 KNEELING FRAME

Equipped with a kneeling frame and roller that allows the patient's buttocks to be pushed out of the table and / or the lumbar section of the spine to be elevated. The kneeling frame and roller have height adjustment. We achieve the angle of the patient by adjusting the footrest of the table, which form the base of this positioner.

#### Detailed information

|   |
|---|
| Mounted on accessory rails                |
| Roller diameter 80 mm                     |
| Two adapters for accessory rails included |
| Polyurethane roller                       |
| <b>Compatibility:</b> SU-14               |



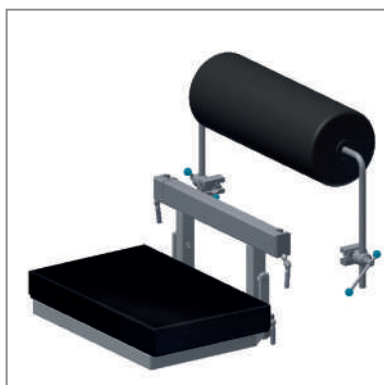
### AS-65 KNEELING FRAME WITH SUPPORTS FOR SPINAL SURGERY

Attachment with thigh/buttock support system (back and side) prevents the patient from slipping during surgery and stabilizes the treatment field.

Adjustable angle and distance from the patient of the backrest and side supports. The rollers have a free rotation mechanism.

#### Detailed information

|   |
|---|
| Mounted on accessory rails                                  |
| Roller diameter (stomach) 80 mm or 210 mm (option, AS-16.5) |
| Two adapters for accessory rails included                   |
| Side and rear supports made of foam mattress                |
| Polyurethane roller   |
| <b>Compatibility:</b> SU-02, SU-03, OPTIMA (SU-05.09, 5.12) |



### AS-11.0 POZYCJONER PROKTOLOGICZNY

Equipped with a kneeling frame and roller that allows the patient's buttocks to be pushed out of the table and / or the lumbar section of the spine to be elevated. The kneeling frame and roller have height adjustment. We achieve the angle of the patient by adjusting the footrests of the table, which form the base of this positioner.

#### Detailed information

|   |
|---|
| Mounted on wedges                             |
| Roller diameter 210 mm                        |
| Polyurethane roller                           |
| Supporting mattress from foam, sewn and glued |
| <b>Compatibility:</b> HYPERION                |



**WS-29.7**  
**UROLOGICAL BOWL**

Made of stainless steel, big range of motion (rotation around the vertical axis of the arm), it has a drain and a plastic hose.

Option: stainless steel strainer WS-89.5

**Detailed information**

Mounted on wedge

Bowl dimensions 65 x 265 x 325 mm

Capacity: 4 liters

Drain ø 18 mm

**Compatibility:** SU-02, SU-03, OPTIMA (5.09, 5.12, 5.15, 5.20), [WS-29.7W3], SU-14 [WS-29.7W2]



**WS-29.8**  
**UROLOGICAL BOWL**

Made of stainless steel, big range of motion (rotation around the vertical axis of the arm), it has a drain and a plastic hose.

Option: stainless steel strainer WS-89.5

**Detailed information**

Mounted on wedge

Bowl dimensions 65 x 265 x 325 mm

Capacity: 4 liters

Drain ø 18 mm

**Compatibility:** HYPERION



**WS-28.7**  
**GYNECOLOGICAL BOWL**

Made of stainless steel, big range of motion (rotation around the vertical axis of the arm).

**Detailed information**

Mounted on wedge

Bowl dimensions 65 x 265 x 325 mm

Capacity: 4 liters

**Compatibility:** SU-02, SU-03, OPTIMA (5.09, 5.12, 5.15, 5.20), [WS-28.7W3], SU-14 [WS-28.7W2]



**WS-28.8**  
**GYNECOLOGICAL BOWL**

Made of stainless steel, big range of motion (rotation around the vertical axis of the arm).

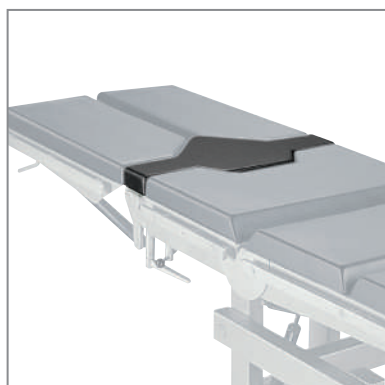
**Detailed information**

Mounted on wedge

Bowl dimensions 65 x 265 x 325 mm

Capacity: 4 liters

**Compatibility:** HYPERION



**WS-67.0**  
**FILLING MATTRESS**

Fills the space between the seat segment and leg segments. Prevents the patient body from being pinched.

**Detailed information**

Dimensions 40 mm x 245 mm x 500 mm

The mattress has a stiffening plate

Translucent for X-rays

**Compatibility:** SZ-01



**WS-59.5**  
**SHOULDER SUPPORT**

It is used to support the patient from the top of the shoulders (or side), recommended during the Trendelenburg tilt to stabilize the patient on the table.

The design allows you to adjust the height and distance from the patient.

Product sold as a pair. Optionally available individually.

**Detailed information**

Dimensions: 24 mm x 70 mm x 152 mm

Mounted on accessory rails

Mattress made of polyurethane

Two adaptors for rails included WS-16.5

**Compatibility:** SZ-01, SU-14, SU-02, SU-03, OPTIMA (5.09, 5.12, 5.15, 5.20), FLARE, HYPERION



**WS-06.6**  
**LARGE SHOULDER SUPPORT**

It is used to support the patient from the top of the shoulders (or side), recommended during the Trendelenburg tilt to stabilize the patient on the table. Increased dimensions for improved comfort, especially for bariatric patients.

The design allows you to adjust the height and distance from the patient.

Product sold as a pair. Optionally available individually.

**Detailed information**

Dimensions: 40 mm x 105 mm x 205 mm

Mounted on accessory rails

Foam mattress, sewn and glued

Two adaptors for rails included WS-17.7

**Compatibility:** SZ-01, SU-14, SU-02, SU-03, OPTIMA (5.09, 5.12, 5.15, 5.20), FLARE, HYPERION



**WS-50.6**  
**SHOULDER SUPPORT WITH A LEVER**

Stabilizes the patient - allows you to support him from the side so that he does not move and fall off the table during the procedure. Possible use in supine, prone and lateral position.

Allows you to adjust the height and distance from the patient. Both pivot points are blocked simultaneously by means of a lever.

Product sold as a pair. Optionally available individually.

**Detailed information**

Dimensions: 45 mm x 100 mm x 200 mm

Mounted on accessory rails

Mattress made of polyurethane

Two adaptors for rails included WS-16.5

**Compatibility:** SZ-01, SU-14, SU-02, SU-03, OPTIMA (5.09, 5.12, 5.15, 5.20), FLARE, HYPERION



**WS-92.5**  
**BAG HOLDER**

Used to hang the urine bag directly on the operating table. The handle is equipped with a lock protecting it against accidental falling out of the clamp body.

**Detailed information**

Mounted in the adapter

Made of stainless steel

No bag included

**Compatibility:** SZ-01, SU-14, SU-02, SU-03, OPTIMA (5.09, 5.12, 5.15, 5.20), FLARE, HYPERION

## Famed Żywiec Sp. z o.o.

ul. Fabryczna 1  
34-300 Żywiec, Polska

### Biuro:

tel.: +48 33 866 62 00  
fax: +48 33 475 58 90

### Export:

tel.: +48 33 866 63 75  
fax: +48 33 475 58 90

export@famed.com.pl  
www.famed.com.pl



Edition 166/2024/03/3.

Famed Żywiec reserves the right to modify the product and specification as part of technical progress. All illustrations and photos used in this material are for illustrative purposes only and may not reflect the finished product. The people shown in the photos are not medical professionals. They are models. The device presented in the catalog is intended for use in health care facilities by authorized persons after having read the manual (IFU). Pictures may differ from the actual appearance of the accessories. When choosing them, we suggest contacting our specialists and we advise not to judge their functionalities based only on photos. Famed Żywiec Sp. z o.o. also makes accessories for special customer orders, whose appearance, work and capabilities may differ from those listed in the catalog. All accessories for operating tables manufactured by our company undergo full safety tests and quality controls.

Compatibility of accessories with previous models of Famed Żywiec tables and with tables from other manufacturers is given on request.